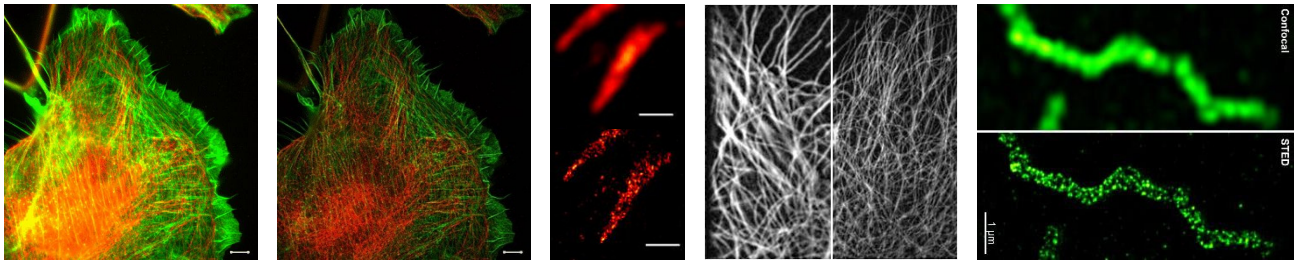


## Super-Resolution Approaches for Membrane organization and early T cell signaling events



Monday 23 November, at 4pm  
AMREP Lecture Theatre  
Alfred Medical Research and Education Precinct.  
75-89 Commercial Rd. Prahran

Followed by refreshments

---

### Assoc Professor Kat Gaus

Centre for Vascular Research, UNSW, Sydney, Australia

Associate Professor Katharina Gaus is an NHMRC Senior Research Fellow and leads the Cell Membrane Biology Group at the Centre for Vascular Research, University of New South Wales, Sydney. The main objective of her research is to identify the principles that govern the organisation of the plasma membrane, and thus define the role of membrane domains in signal transduction processes. The Gaus research group use novel fluorescence microscopy approaches to define the molecular mechanisms that regulate the temporal and spatial organization of cell signalling.

ALL WELCOME

---

Contact:

Stephen Cody, Tel: 9905 5635,

Email: [Stephen.Cody@med.monash.edu.au](mailto:Stephen.Cody@med.monash.edu.au)

Dr. Stanley Stasinopoulos, Tel: 9903 0141

Email: [Stanley.Stasinopoulos@med.monash.edu.au](mailto:Stanley.Stasinopoulos@med.monash.edu.au)

